

EPILOG

FiberMark*

Wattage Options:
10 watts 20 watts



FiberMark Laser System

Permanent marks of all kinds are required on many products today. Fiber lasers, because of their exceptionally long operational life, lack of required maintenance or alignment and relatively low cost are rapidly becoming the marking method of choice for industrial marking applications.

Epilog has taken fiber laser technology and combined it with our flying optics beam delivery system to create the FiberMark laser system, our answer for direct metal marking at a low cost. With prices starting at 30% less than a traditional Nd:YAG system, this is an affordable choice for manufacturers looking for a way to bar code, serialize or add a company logo to their parts.

Mark 2-D data matrix, bar codes, serial numbers, logos and text directly on metal with this easy-to-use system.

Designed with ease of use in mind, the open-architecture driver allows you to print directly to the laser system from almost any Windows®

Max Marking Area	24" x 12" (610 x 305 mm)
Max Material Thickness	5.0 inches (127 mm)
Standard Features	0.5" (12.7 mm) aluminum tooling plate with vacuum hold-down, internal LED lighting, (76.2 mm) focus lens, relocateable home position.
Intelligent Memory Buffer	Store unlimited files up to 64 MB. Rolling buffer allows files of any size to be used.
Operating Modes	Optimized raster, vector, or combined raster/vector mode.
Motion Control	High-speed, continuous loop, DC servomotors using linear and rotary encoding technology for precise positioning.
X-Axis Bearings	Ground and polished stainless steel NeverWear™ bearing system.
Belts	Advanced B-style doublewide Kevlar precision drive belts.
Resolution	User controlled choice from 75 to 1200 dpi.
Speed/Power Control	Computer or machine controlled speed and power in 1% increments to 100%.
Print Interface	Ethernet or USB connection. Compatible with Windows XP/2000.
Size	35" W x 16" H x 23.5" D (889 x 406 x 597 mm)
Electrical Requirements	Auto-switching power supply accommodates 110 to 240 volt, 50 or 60 Hz, single phase, 15 amp AC.
Ventilation	External exhaust to the outside required via single 4 inch (101.6 mm) output port.

Marking:

- Titanium
 - Steel
 - Aluminum
 - Brass
 - Carbide
 - Anodized Aluminum
 - Plastics
 - Ceramics
- And many other materials

LED Cabinet Lighting

View the marking table with additional lighting

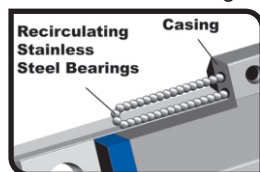
For easy viewing of the marking area, use the inline LED lighting to illuminate the entire work table. The lights can be easily turned on using the On/Off switch located on the top of the FiberMark lid.



Flying Optics System



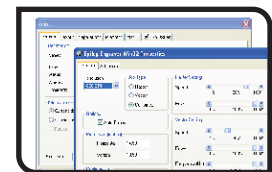
NeverWear™ Bearings



Non-Contact Marking



Works like a Printer



Contact Us At Engraver's Express:

Vancouver: 1-604-533-3467 Calgary: 1-403-569-0402 Toronto: 1-905-602-5900 Quebec: 1-514-339-5555